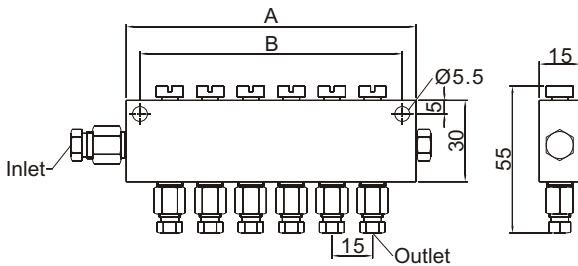


B Type Adjustable Distributor



| Model | Outlet Num. | Inlet Bore | Outlet Bore | A (mm) | B (mm) | Inlet BoreØ4 Weight(g) | Inlet BoreØ6 Weight(g) |
|-------|-------------|----------------------------|----------------------------|--------|--------|------------------------|------------------------|
| B-2 | 2 | StandardsØ6 Ø4 Optional | StandardsØ4 Ø6 Optional | 47 | 37 | 96 | 99 |
| B-3 | 3 | | | 62 | 52 | 127 | 130 |
| B-4 | 4 | | | 77 | 67 | 159 | 162 |
| B-5 | 5 | | | 92 | 82 | 189 | 192 |
| B-6 | 6 | | | 107 | 97 | 221 | 224 |
| B-7 | 7 | | | 122 | 112 | 251 | 254 |
| B-8 | 8 | | | 137 | 127 | 283 | 286 |
| B-9 | 9 | | | 152 | 142 | 313 | 316 |
| B-10 | 10 | | | 167 | 157 | 343 | 346 |
| B-11 | 11 | | | 182 | 172 | 371 | 374 |
| B-12 | 12 | | | 197 | 187 | 404 | 407 |



◆ Order Code :

B-6 **6** **4**

| | |

Outlet Number Inlet Bore Outlet Bore

2 : 2 Outlets 4 : Ø4 4 : Ø4

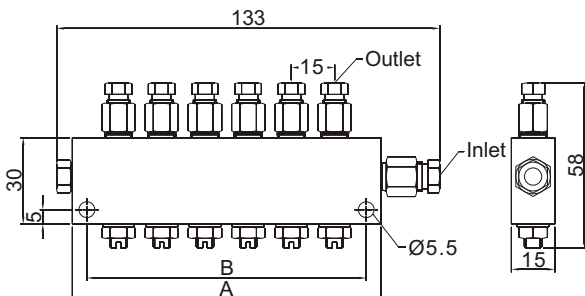
to 6 : Ø6

12 : 12 Outlets

CB Type Anti-Vibration Distributor With Nut



| Model | Outlet Num. | Inlet Bore | Outlet Bore | A (mm) | B (mm) | Inlet BoreØ4 Weight(g) | Inlet BoreØ6 Weight(g) |
|-------|-------------|----------------------------|----------------------------|--------|--------|------------------------|------------------------|
| CB-2 | 2 | StandardsØ6 Ø4 Optional | StandardsØ4 Ø6 Optional | 47 | 37 | 101 | 103 |
| CB-3 | 3 | | | 62 | 52 | 134 | 136 |
| CB-4 | 4 | | | 77 | 67 | 166 | 168 |
| CB-5 | 5 | | | 92 | 82 | 198 | 200 |
| CB-6 | 6 | | | 107 | 97 | 230 | 232 |
| CB-7 | 7 | | | 122 | 112 | 263 | 265 |
| CB-8 | 8 | | | 137 | 127 | 295 | 297 |
| CB-9 | 9 | | | 152 | 142 | 315 | 317 |
| CB-10 | 10 | | | 167 | 157 | 362 | 364 |
| CB-11 | 11 | | | 182 | 172 | 375 | 377 |
| CB-12 | 12 | | | 197 | 187 | 410 | 412 |



◆ Order Code :

CB-6 **6** **4**

| | |

Outlet Number Inlet Bore Outlet Bore

2 : 2 Outlets 4 : Ø4 4 : Ø4

to 6 : Ø6 6 : Ø6

12 : 12 Outlets