

# CXS Series (Ø6 ~ Ø32)

## Twin Rod Cylinder/Basic Type



The way to automation

- Cylinder
- Sizing
- SI
- SI A.
- SC / SU
- SCT
- SC A.
- DSN
- DSN A.
- MA
- MAL
- MA/MAL A.
- SDA
- CQ2
- CJ2
- CDU
- TN
- CXS**
- MGP
- MSQ



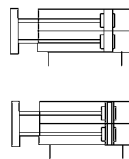
### Features

Double rod with double force for higher anti-bending and anti-twisted strength ensured durable life and perfect directional characteristic.

### Ordering Code

<b>CXS</b>	<b>M</b>	<b>20</b>	<b>100</b>	<b>MT</b>
Type Bearing	Bore	Stroke	Sensor	
M: Slidable bearing	6 20	As S/M chart	Blank: Without sensor	
L: Ball bearing	10 25 15 32		* To choose proper sensor switch, please refer to stroke/ sensor switch chart.	

### Symbol



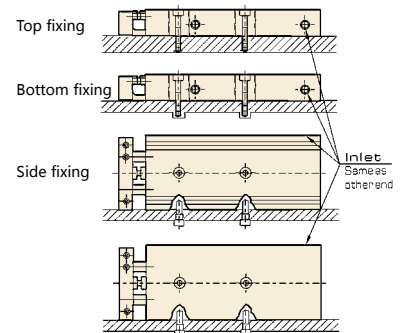
### Stroke/Sensor Switch Model

Bore (mm)	Standard Stroke	*Sensor Switch Model (Install by Orbit type)
6	10, 20, 30, 40, 50	
10	10, 15, 20, 25, 30, 40, 45, 50, 60, 70, 75,	D-Z73L D-Z76L D-Z80L
15		D-Y59AL D-Y59BL
20	10, 15, 20, 25, 30, 40, 45, 50, 60, 70, 75, 80, 90, 100	
25		
32		

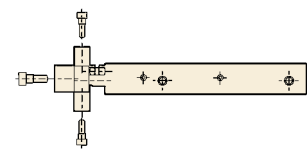
### Specification

Bore (mm)	6	10	15	20	25	32
Operation Fluid	Air					
Operation	Double Acting					
Proof Pressure	1.05 MPa					
Max. Operation Pressure	0.7 MPa					
Ambient and fluid temp	5 ~ 60 °C					
Buffer	Both end Rubber Gasket Cushioning					
Piston Speed	30 ~ 800 mm/s	30 ~ 800 mm/s	30 ~ 700 mm/s	30 ~ 600 mm/s		
*Lubrication	Non-lub					
Adjustable stroke range	Returned Stroke 0 ~ -5 mm					
Bearing	Slidable bearing/Ball Bearing					
Non-rotating rod precision	Slidable bearing	± 0.1°				
	Ball Bearing	± 0.1°				
Port Size Rc	M5 x 0.8					1/8
Structure	Double Cylinder (Double force)					

Cylinder body can be fixed, position port can be choosed



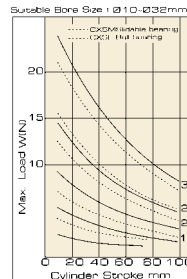
3 Panels intallstion allowed



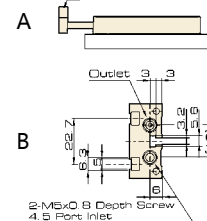
### Suitable Bore Size Ø6

Model	Stroke				
	10	20	30	40	50
CXSM6	0.8	0.66	0.54	0.46	0.40
CXLM6	1.08	0.88	0.69	0.59	0.49

### Suitable bore size Ø6



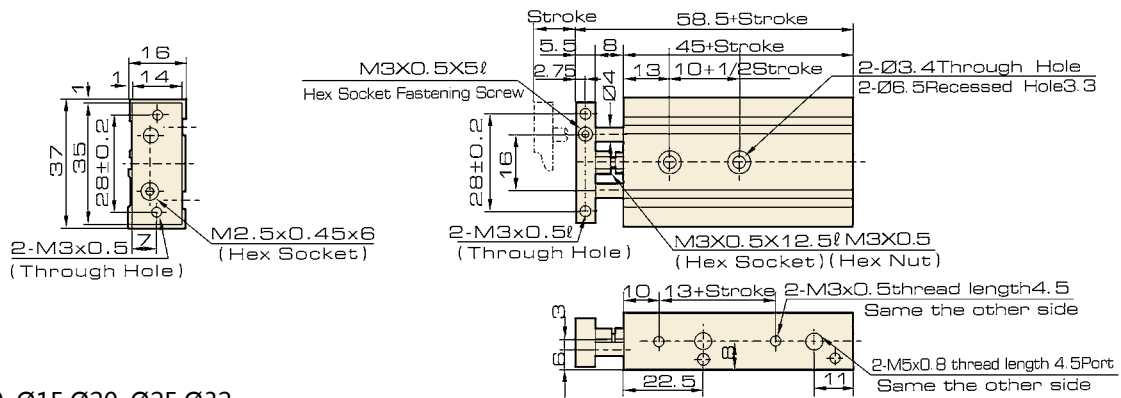
Max. Allowable Load Below A indicates type of mounting, while below B indicates type of installation.



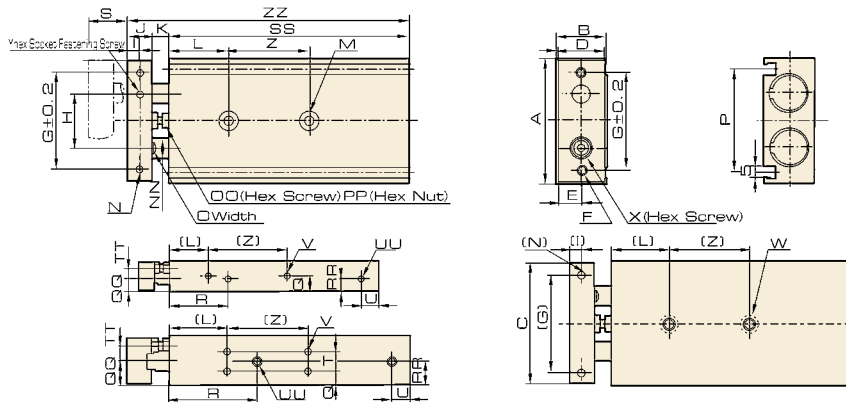
### Overall Dimension

#### CXS

Ø6



Ø10, Ø15, Ø20, Ø25, Ø32



### Dimension

Model	A	B	C	D	E	F	G	H	I	J	K	L	M	N	NN	O	OO	P	PP	Q	QQ	R	RR	S	SS	T	TT	U	UU	V	W	X	Y	Z	ZZ			
CXSØ10-10																								10	65										30	82		
CXSØ10-20																								20	75											92		
CXSØ10-30																								30	85											102		
CXSØ10-40	46	17	44	15	7.5	2-M4 x0.7 (Port)	35	20	4	8	9	20												40	95		5	8								112		
CXSØ10-50																								50	105												122	
CXSØ15-10																								10	70												25	89
CXSØ15-20																								20	80													99
CXSØ15-30																								30	90													109
CXSØ15-40	58	20	56	18	9	2-M5 x0.8 (Port)	45	25	5	10	9	30												40	100		5	8									119	
CXSØ15-50																								50	110													129
CXSØ20-10																								10	80													104
CXSØ20-20																								20	90													114
CXSØ20-30																								30	100													124
CXSØ20-40	64	25	62	23	11.5	2-M5 x0.8 (Port)	50	28	6	12	12	30												40	110												134	
CXSØ20-50																								50	120													144
CXSØ20-75																								75	145													169
CXSØ20-100																								100	170												194	
CXSØ25-10																								10	82													106
CXSØ25-20																								20	92													116
CXSØ25-30																								30	102													126
CXSØ25-40	80	30	78	28	14	2-M6 x1.0 (Port)	60	35	6	12	12	30												40	112		13	9	9									136
CXSØ25-50																								50	122													146
CXSØ25-75																								75	147													171
CXSØ25-100																								100	172													196
CXSØ32-10																								10	92													122
CXSØ32-20																								20	102													132
CXSØ32-30																								30	112													142
CXSØ32-40	98	38	96	36	18	2-M6 x1.0 (Port)	75	44	8	16	14	30												40	122		20	11.5	10								152	
CXSØ32-50																								50	132													162
CXSØ32-75																								75	157													187
CXSØ32-100																								100	182												212	

- Cylinder
- Sizing
- SI
- SI A.
- SC / SU
- SCT
- SC A.
- DSN
- DSN A.
- MA
- MAL
- MA/MAL A.
- SDA
- CQ2
- CJ2
- CDU
- TN
- CXS
- MGP
- MSQ