

CE
ISO9001:2000

2P Series

2/2 Way Solenoid Valve (Direct Operated)



Valve

4V100
4V200
4V300
4V400
Manifold
3V1
JEL
JZF
MVSD
VF, VZ
BM, PU, AM
Diaphragm

Coil

2V
2W
2W(Big)

2P

2L

VX

PU

PU225

2Q

JEL5404

JEL6213

Pulse

JEL, JZF

4H

TSV86

MPV

4HV

HV, K

4R

4F

MSV

JM

ASC, RE

QE, QEA

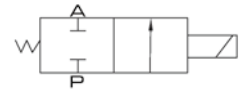
ST

HSV

Ordering Code

2P	025	06	AC110V	W
Specification	Orifice Size	Port size	Standard Voltage	Wiring
2P: 2/2 way	025: 2.5 mm	06: 1/8" 08: 1/4"	DC12V DC24V AC110V 50Hz/60Hz AC220V 50Hz/60Hz AC380V 50Hz/60Hz	Blank: Without light indicator LD: Brown with light indicator LD1: White with light indicator W: Lead wire

Symbol



Specification

Model	2P025-06	2P025-08
Working Medium	Air, Water, Oil, Gas	
Operation	Direct	
Type	Normal Close	
Orifice	2.5 mm	
CV Value	0.23	
Port Size	1/8"	1/4"
Operation Fluid Viscosity	Below 20 CST	
Working-pressure	0 ~ 0.7 MPa	
Max. Test Pressure	1.0 MPa	
Max. Ambient Temperature	-5 ~ 80	
Operating Voltage Tolerance	± 10%	
Material of Body	Engineering Plastic	
Material of Oil Seal	NBR or VITON	

Overall Dimension

2P Series

