

2V Series

2/2 Way Solenoid Valve



The way to automation

- Valve
- 4V100
- 4V200
- 4V300
- 4V400
- Manifold
- 3V1
- JEL
- JZF
- MVSD
- VF, VZ
- BM, PU, AM
- Diaphragm
- Coil
- 2V**
- 2W
- 2W(Big)
- 2P
- 2L
- VX
- PU
- PU225
- 2Q
- JEL5404
- JEL6213
- Pulse
- JELJZF
- 4H
- TSV
- MPV
- 4HV
- HV, K
- 4R
- 4F
- MSV
- JM
- ASC, RE
- QE, QEA
- ST
- HSV



2V010-M4

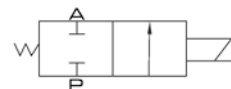
2V025-08

2V130-15

Ordering Code

2V	025	06	AC110V	V
Specification	Orifice size	Port size	Standard Voltage	Sealing
2V: 2/2 way	010: 1.0 mm 025: 2.5 mm 130: 13 mm 250: 25 mm	M4: M 4×0.7 06: 1/8" 08: 1/4" 10: 3/8" 15: 1/2" 20: 3/4" 25: 1"	DC12V DC24V AC24V 50Hz/60Hz AC110V 5 Hz/60Hz AC220V 50Hz/60Hz AC380V 50Hz/60Hz	Blank: NBR V: Viton (for high temperature gas)

Symbol

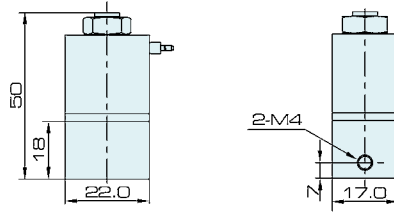


Specification

Model	2V010-M4	2V025-06	2V025-08	2V130-10	2V130-15	2V250-20	2V250-25
Working Medium	Air, Water, Oil						
Operation	Direct			Internal piloted			
Type	Normal Close						
Orifice	1.0 mm	2.5 mm		13 mm		25 mm	
CV Value	0.04	0.23		6.2		23	
Port Size	M 4 × 0.7	1/8"	1/4"	3/8"	1/2"	3/4"	1"
Operation Fluid Viscosity	Below 20 CST						
Working-pressure	0.05 ~ 0.7 MPa						
Max. Test Pressure	1.2	1.6		1.0			
Max. Ambient Temperature	-10 ~ 80						
Operating Voltage Tolerance	± 10%						
Protect Class	IP 65						
Power Consumption	AC: 6.5 VA DC: 6.5 W						
Insulation	F Class						
Material of Body	Aluminum or Brass (Nickel Plated)				Brass		
Material of Oil Seal	NBR Or VITON				NBR Or VITON		
Response Time	0.05 Sec.						

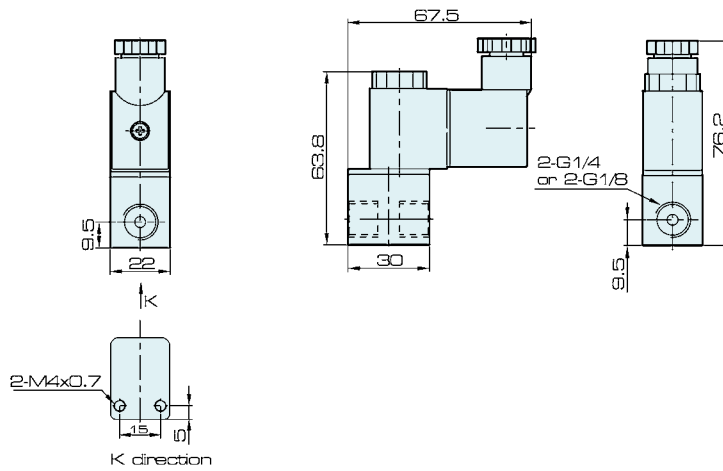
Overall Dimension

2V010-M4



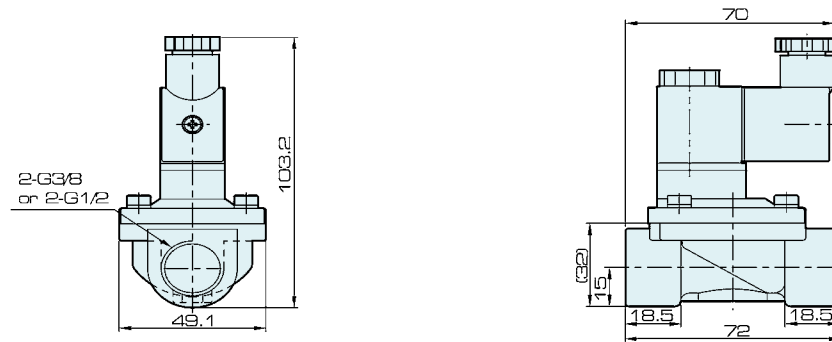
2V025-06

2V025-08



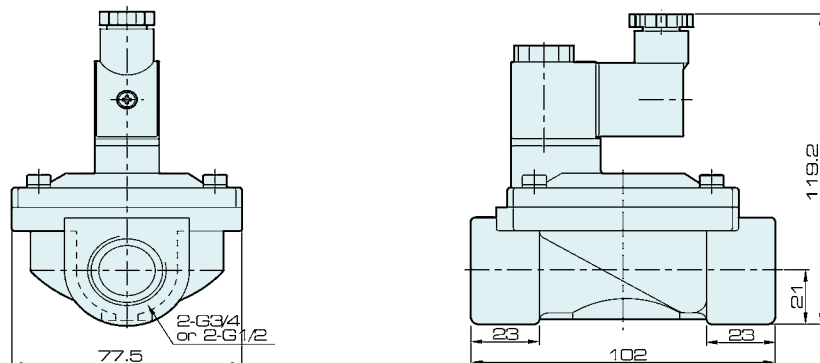
2V130-10

2V130-15



2V250-20

2V250-25



Valve

4V100

4V200

4V300

4V400

Manifold

3V1

JEL

JZF

MVSD

VF, VZ

BM, PU, AM

Diaphragm

Coil

2V

2W

2W(Big)

2P

2L

VX

PU

PU225

2Q

JEL5404

JEL6213

Pulse

JEL, JZF

4H

TSV86

MPV

4HV

HV, K

4R

4F

MSV

JM

ASC, RE

QE, QEA

ST

HSV