

BU Series

2/2 Way Solenoid Valve



The way to automation

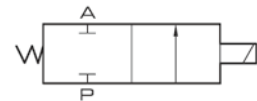
- NEW
- JZF
- SV
- MCS
- BU
- DJF
- JELMP
- JELP/G
- JEL
- GC
- ZYR
- SQ
- DNT
- SIB
- JDA



Ordering Code

BU	08	A
Model	Port Size	A: Inner Diameter Of Miring is $\varnothing 13.3\text{mm}$, Code of Wiring is SB520 Blank: Inner diameter of miring is $\varnothing 14.3\text{mm}$, Code of wiring is KT09

Symbol

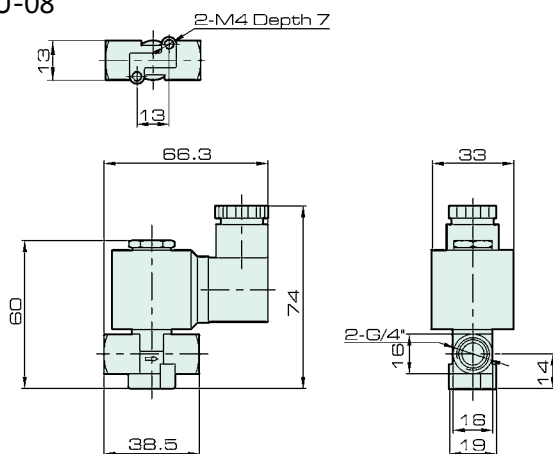


Specification

Model	BU-08, BU-08A
Position Number	2/2 Way
Aperture Size	$\varnothing 2.8\text{ mm}$
Operation	Direct
Filter Precision	Air, Water, Oil
Working Pressure	0 ~ 1.0 MPa
Working Temperature	-10 ~ 150 °C
Voltage Range	$\pm 10\%$
Protection Class	IP 65
Power Consumption	AC : 13 VA, DC : 9 W
Insulation	F Class

Overall Dimension

BU-08



BU-08A

