

551 Series

NAMUR Solenoid valve



CE
ISO9001:2008

551 Series

NAMUR Solenoid valve

NEW
JZF
SV
MCS
551
BU
DJF
JELMP
JELP/G
JEL
GC
FE
ZYR10
SDE
SQ
DNT
SIB
SL
DSN-R
DSNB
MB
JDA
MAR300LK

NEW
JZF
SV
MCS
551
BU
DJF
JELMP
JELP/G
JEL
GC
FE
ZYR10
SDE
SQ
DNT
SIB
SL
DSN-R
DSNB
MB
JDA
MAR300LK

Feature

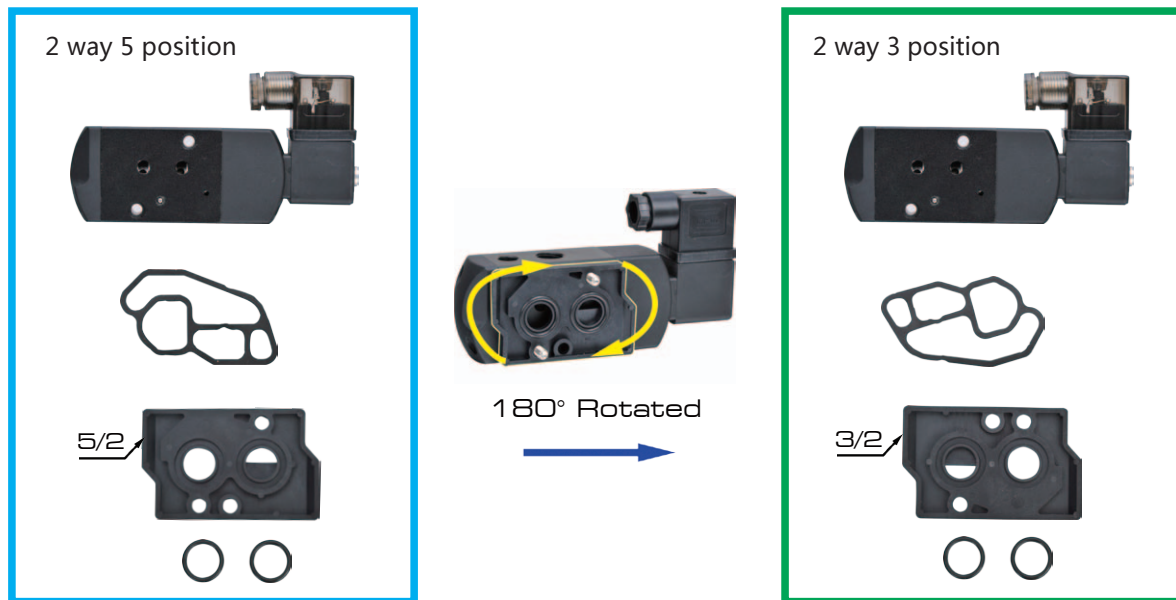
- Aluminum valve body, with thread connector and Namur interface.
- A slide valve can be assembled to 3/2 closed or 5/2 in order to control acting and single acting actuator.
- With hand operator.
- Coil can be rotated 360°.



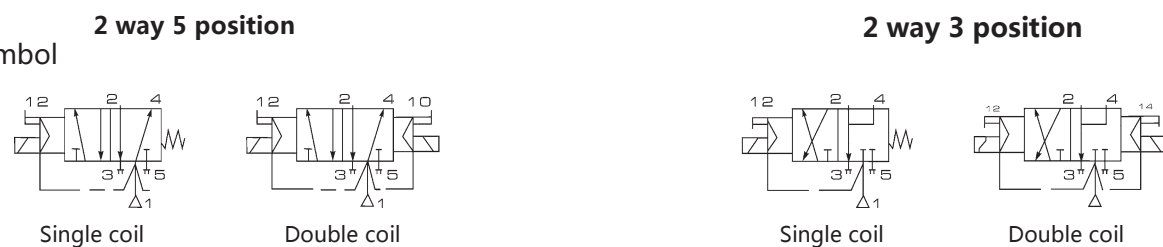
Ordering Code

NAMUR551	A01	DC24V
Series Code	Coil and Type	Standard Voltage
NAMUR551 Series	A01: Single coil A02: Double coil	DC24V AC110V AC220V

Install Instruction



Symbol



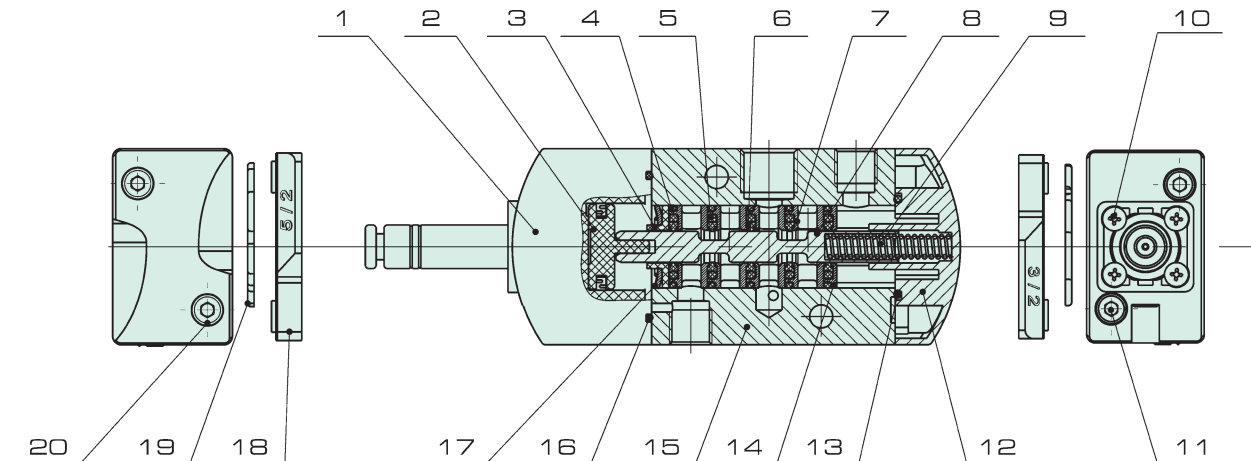
Specification

Working Pressure : 2-10bar
 Max Pressure : 10bar
 Flow Rate : 700L/min
 Medium : Air,Clean air
 Ambient Temperature : -25°C to +60°C
 Seal : NBR+PUR
 Port Size : Inlet=G1/4" Exhaust=G1/8"

Feature

Coil Power : DC 3W; AC 4VA
 Standard Voltage : DC24V; AC220V
 Voltage tolerance : ±10%
 Insulation class : F
 Protect class : IP65
 Operation : 100%

Inner Structure



Parts list

Number	Name	Number	Name
1	Pilot Kits	11	Inner Hexagonal Nut Bolt
2	Piston Kits	12	Tinny Cover
3	Left Bracket	13	O ring
4	O ring	14	Right Bracket
5	O ring	15	Valve Body
6	Flat Ring	16	Seal
7	Bracket	17	Spring Shield Ring
8	Valve Shaft	18	Subbase
9	Spring	19	Subbase Seal
10	Tapping Screw With Gasket	20	Inner Hexagonal Nut Bolt