

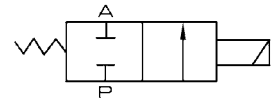


Valve
4V100
4V200
4V300
4V400
Manifold
3V1
JEL
JZF
MVSD
VF, VZ
BM, PU, AM
Diaphragm
Coil
2V
2W
2W(Big)
2P
2L
VX
PU
PU225
2Q
JEL5404
JEL6213
Pulse
JEL, JZF
4H
TSV86
MPV
4HV
HV, K
4R
4F
MSV
JM
ASC, RE
QE, QEA
ST
HSV

Ordering Code

PU	225	03	A	AC220V	T
Specification	Operation	Port Size	Fix Form	Standard Voltage	Seal Form
PU : 2/2 way	225: Internal pilot	03: 3/8"	A: Standard type	AC220V	Blank: Standard seal
SPU : 2/2 way Stain- less steel		04: 1/2"	F: Flange install	AC110V	T: Seal with time
		06: 3/4"		DC12V	
		08: 1"		DC24V	
		12: 1 1/4"			
		14: 1 1/2"			
		20: 2"			

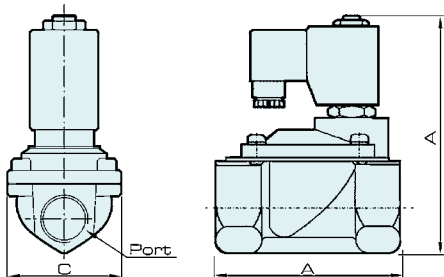
Symbol



Specification

Model	PU225-03A	PU225-04A	PU225-06A	PU225-08A	PU225-12A	PU225-14A	PU225-20A
	SPU225-03A	SPU225-04A	SPU225-06A	SPU225-08A	SPU225-12A	SPU225-14A	
Working Medium	Air, Water, Oil						
Operation	Internal Piloted						
Type	Normal Close						
Orifice	13 mm	13 mm	25 mm	25 mm	38 mm	38 mm	50 mm
CV Value	4.50	4.50	12.00	12.00	22.00	30.00	48
Port Size	3/8"	1/2"	3/4"	3/4"	1 1/4"	1 1/2"	2"
Medium of Body	Brass or Steel						
Operation Fluid Viscosity	Below 50 CST						
Working-pressure	0.5 ~ 10 kgf/cm ²						
Max. Test Pressure	15 kgf/cm ²						
Ambient Temperature	-5 ~ 80 °C						

Overall Dimension



Dimension

Model	Bore	A	B	C
PU225-03A SPU225-03A	3/8"	66.5	106.5	48.0
PU225-04A SPU225-04A	1/2"	66.5	106.5	48.0
PU225-06A SPU225-06A	3/4"	96.0	126.0	70.0
PU225-08A SPU225-08A	1"	96.0	126.0	70.0

Model	Bore	A	B	C
PU225-12 A SPU225-12A	1 1/4"	131.0	145.5	96.0
PU225-14A SPU225-14A	1 1/2"	131.0	145.5	96.0
PU225-20A	2"	160.0	160.5	112