

CE
ISO9001:2000

JEL5404 Series

High Pressure and Temperature Solenoid Valve



JEL5404-04



JEL5404-06



JEL5404-08

Valve

4V100

4V200

4V300

4V400

Manifold

3V1

JEL

JZF

MVSD

VF, VZ

BM, PU, AM

Diaphragm

Coil

2V

2W

2W(Big)

2P

2L

VX

PU

PU225

2Q

JEL5404

JEL6213

Pulse

JEL, JZF

4H

TSV86

MPV

4HV

HV, K

4R

4F

MSV

JM

ASC, RE

QE, QEA

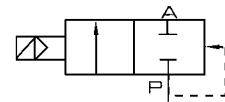
ST

HSV

Ordering Code

JEL	5404	04	AC220V	D
JELPC	Model	Port size	Standard Voltage	Wiring
		04: 1/2"	DC12V DC24V	Blank: Lead wire with steel covered coil
		06: 3/4"	AC24V 50/60Hz	D: DIN terminal
		08: 1"	AC110V 50/60Hz	
			AC220V 50/60Hz	
			AC380V 50/60Hz	

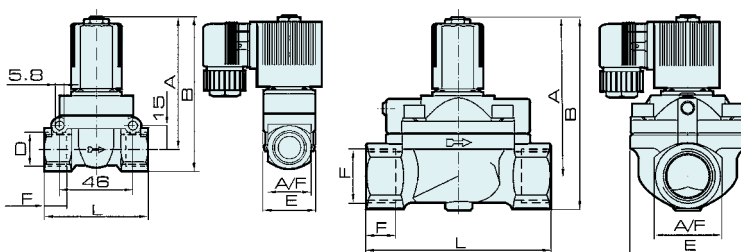
Symbol



Specification

Model	JEL5404-04	JEL5404-06	JEL5404-08
Working Medium	Air, Water, Oil		
Operation	Internal Piloted		
Type	Normal Colse		
Orifice	12 mm	20 mm	25 mm
KV Value	2.0	5.0	10.0
Port Size	1/2"	3/4"	1"
Applied pressure Range	Gas / Liquid: 1 ~ 50 kgf/cm ²	Gas: 1 ~ 40 kgf/cm ² Liquid: 1 ~ 25 kgf/cm ²	Gas: 1 ~ 40 Liquid: 1 ~ 25
Max. Test Pressure	75 kgf/cm ²	60 kgf/cm ²	
Ambient Temperature Range	-5 ~ 150 °C		
Applied Voltage Range	± 10%		
Protection	IP 65		
Power Consumption	AC: 5.5VA DC: 9W		
Insulation	F Class		
Material of Body	Brass		
Material of Oil Seal	PTFE		

Overall Dimension



Dimension

Model	Orifice mm	Port Size	A	B	F	D	L	A/F
JEL5404-04	12.0	1/2"	83.0	95.5	14	32	65	27
JEL5404-06	20.0	3/4"	99.5	119	16	60	92	40
JEL5404-08	25.0	1"	99.5	119	16	60	92	40