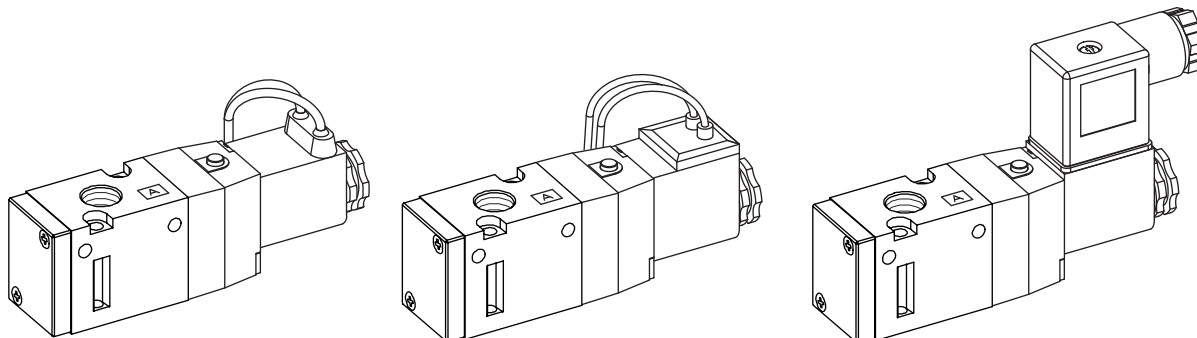


3Port Pilot Operated Solenoid Valve (SV)

SV231~232 Series

- 26.5mm Body width
- Transition Flow 1000 l/min (5kg/f)

SV

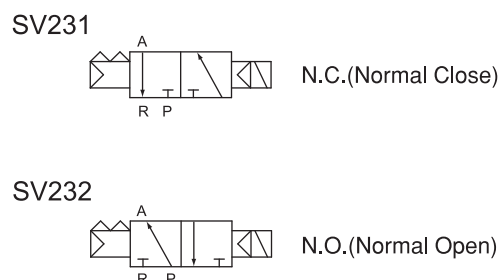


How to order

SV231 - 110V - GL - P - 02

- Solenoid valve**
- Function**
 - 1 - N.C. (Normal Close)
 - 2 - N.O. (Normal Open)
- Coil Rate Voltage**
 - 220V - AC 220V
 - 110V - AC 110V
 - 24V - AC 24V
 - D24V - DC 24V
- Coil type**
 - Nil - without coil
 - G - Flying Leads (Grommet)
 - GL - Flying Leads with LED Lamp (Grommet)
 - C - 3Pin Connector coil with connector
 - CL - 3Pin Connector coil with LED Lamp connector
- Manual Operator**
 - P - Push Button
- Ports Size**
 - 02 - Rc(PT) 1/4

Symbol



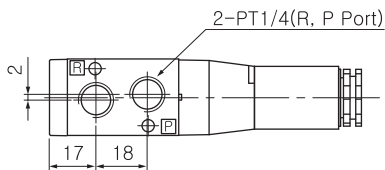
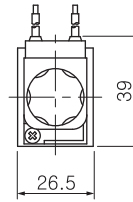
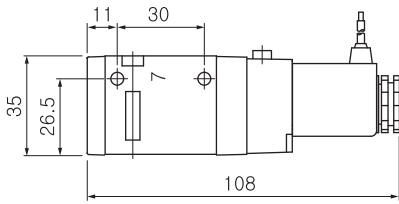
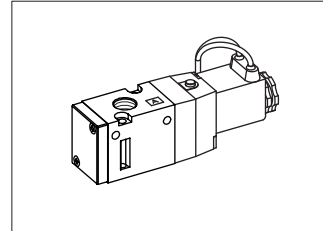
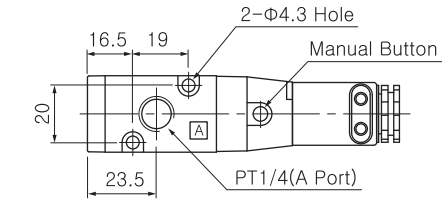
Specification

Fluid	Compressed Air
Pressure	1.5~9.9 kgf/cm ²
Eff. Sectional Area(5 kgf/cm ²)	19.0 mm ²
Ambient & Fluid Temp.	5 ~ 60 °C (41~140 °F)
Manual Override	Push Button
Response Time	25ms or less
Max. Working Frequency	5c/sec
Power Consumption	AC: 4.9VA(60Hz) / DC: 2.5W
Coil Insulation Class	F-Class or Equivalent
Permissible Voltage Variation	±10% of Rate Voltage
Lubrication	Not required

DIMENSIONS (mm)

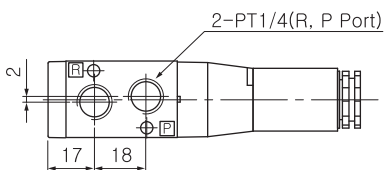
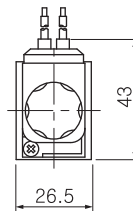
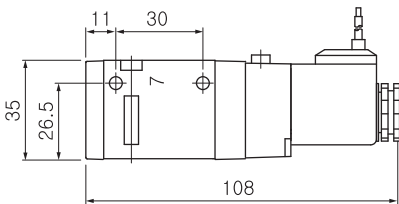
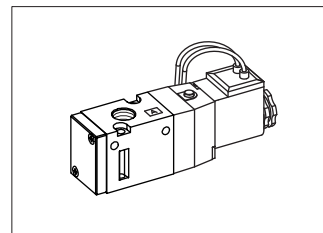
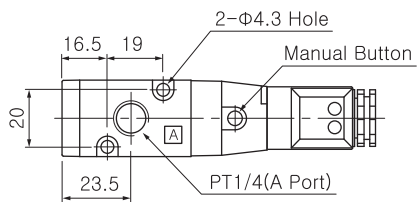
2position / 3port (Grommet type)

SV23□-□□□V-G-...



2position / 3port (Lamp type)

SV23□-□□□V-GL-...



● DIMENSIONS (mm)

2position / 3port (Connect type)

SV23□-□□□V-C□-...

