



LZB-() last flow glass rotor flow meter W(B)

1. Type specification and main technical parameter

Nominal open DN directly mm	Type	Range degree	Measure the range		Grade of accuracy	The awl is in charge of length mm	Allow the fluid state examined	
			Water is (20 Degrees Centigrade)	Air is (1.013*10 Pa 20 Degrees Centigrade)			Temperature Degrees Centigrade	P MPa
3	LZB-3W	10:1	2.5-25ml/min	0.03-0.3L/min	4	100	0 -60	≤ 0.2
	LZB-3WB		6-60ml/min	0.06-0.6L/min	6			
			10-100ml/min	0.1-1L/min				
4	LZB-4W		16-160ml/min	0.3-3L/min	2.5			
	LZB-4WB	25-250ml/min	0.6-6L/min	4				
		40-400ml/min	0.7-7L/min					

6	LZB-6W	0.04-0.4l/min	0.7-7L/min	1.5	120
	LZB-6WB	0.06-0.6l/min	1-10L/min		
		0.1-1l/min	1.5-15L/min		
10	LZB-10W	0.1-1l/min	3-30L/min	2.5	120
	LZB-10WB	0.16-1.6l/min	5-45L/min		

2. The appearance and installation connect size:

Take the regulating valve (WB type) and not take two kinds of forms of regulating valve (W type), see Fig.1, Fig.2 in its appearance picture in flow , installation connects size and sees Form 1

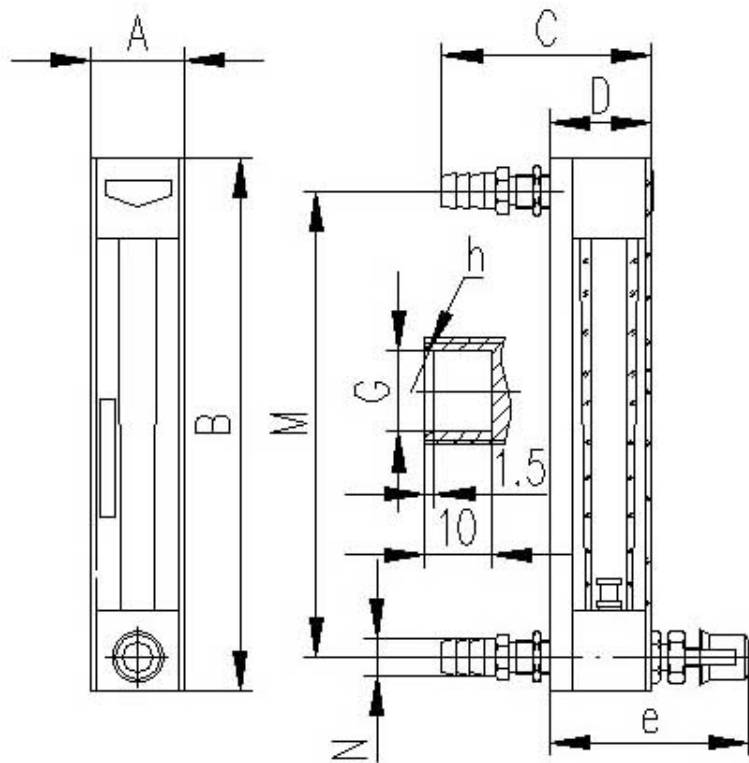


Fig. 1

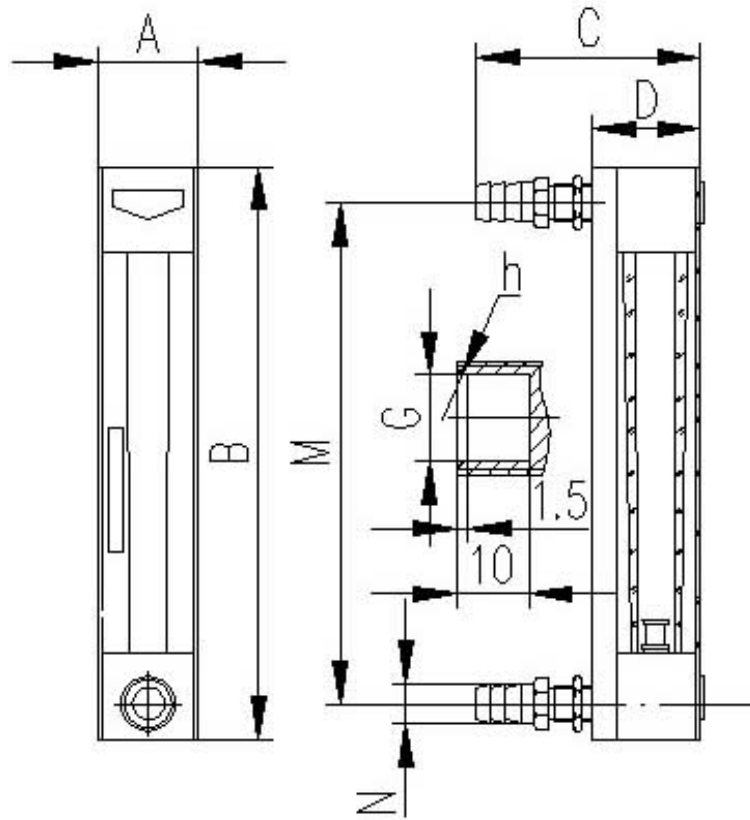


Fig. 2

Form 1

Nominal open DN directly	Type	A	B	C	D	M	E*	N			Mounting hole of the equipment	
								The hose connecting and chewing	The metal pipe connecting and chewing			
									Other whorl	G		h
3	LZB-3W	28	136	56	27.5	116	<52	Ø8	M10 *1	Ø6.2	SR4	Ø11
	LZB-3WB											
4	LZB-4W											
	LZB-4WB											

6	LZB-6W		58				Ø10	M12 *1	Ø8.2	SR5	
	LZB-6WB			29.5		<60					
10	LZB-10W	160	63		140		Ø11	M16*1.5	Ø12.1	SR7	
	LZB-10WB										

Note: *WB is exclusive