

WEGA STANDARD DRY PRESSURE GAUGE

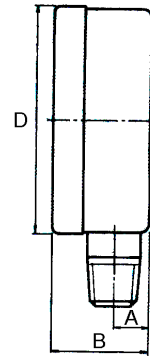
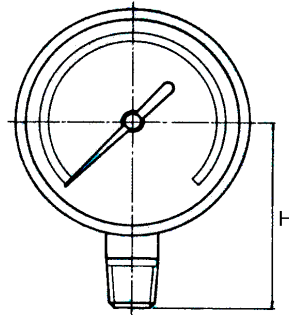
Construction: Steel black case, steel black(chrome) bezel, glass windows, brass internal and connection

Application: For measurement of steam, air, oil, water and other pressure media

which have no effect on bronze and brass



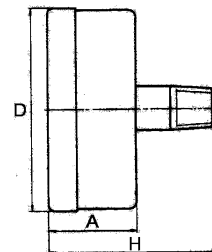
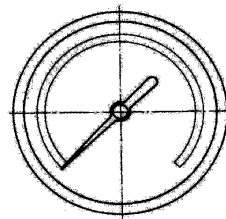
bottom connection



Dial Size	D	A	B	Connect	H	Range(Kg/cm ²)
1.5"	42.5	8	22.5	1/8"	37.5	-1-0, -1-3, -1-9, 0-2, 0-4, 0-5, 0-7, 0-10, 0-15, 0-16, 0-20, 0-25, 0-100, 0-250
2"	53	9.5	27.5	1/4"	46	
2.5"	63.3	9.5	28	1/4"	51	
3"	75.3	9.5	28	3/8"	60	
4"	100.5	14	34.5	1/2"	75	



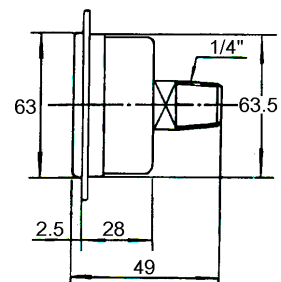
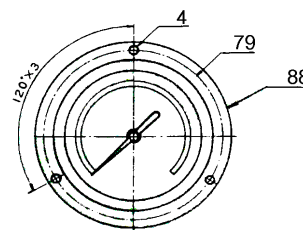
center back connection



Dial Size	D	A	H(1/8")	H(1/4")	Range(Kg/cm ²)
1.5"	42.5	24.5	38.5	40.5	-1-0, 0-2, 0-5, 0-10, 0-11, 0-15, 0-20
2"	53	27.5	44	46	



center back connection with front flange dial size 2.5"



Range(Kg/cm²) -1-0, -1-3, -1-9, 0-4, 0-7, 0-10, 0-16, 0-20, 0-25, 0-100